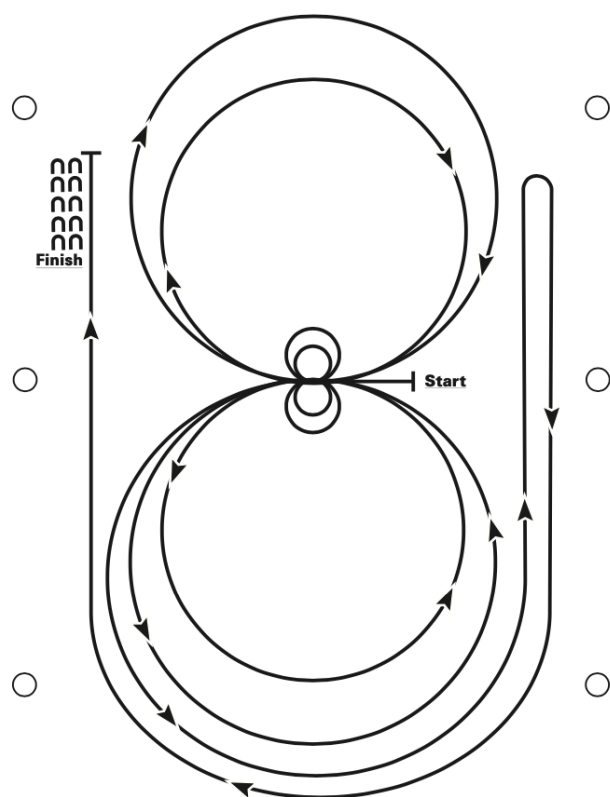


(To be used for Novice Youth/Novice Amateur, and Green Reining Only)

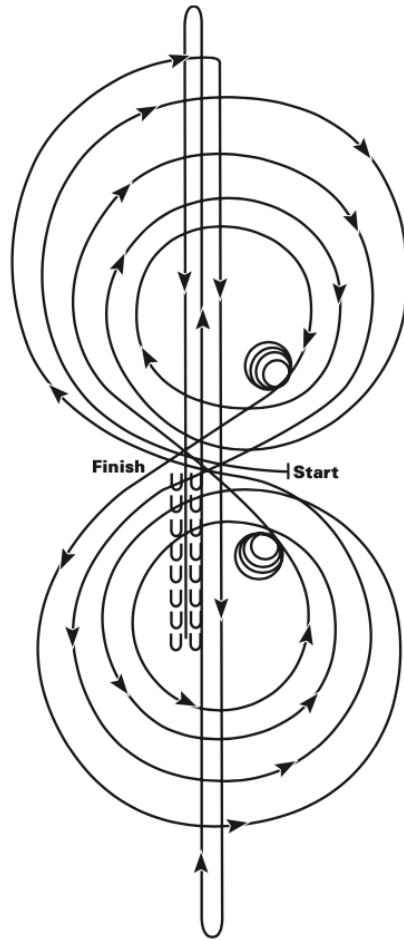


140. Reining Open, All Breeds
141. APHA Reining, Youth 18 & Under
142. APHA Reining, Novice Amateur

Horses may walk or jog to the center of the arena. Horses must walk or stop prior to starting the pattern. Beginning at the center of the arena facing the left wall or fence.

1. Beginning on the left lead, complete two circles to the left. Stop at the center of the arena. Hesitate.
2. Complete two spins to the left. Hesitate.
3. Beginning on the right lead complete two circles to the right.
4. Stop at the center of the arena. Hesitate.
5. Complete two spins to the right. Hesitate.
6. Beginning on the left lead, go around the end of the arena, run down the right side of the arena past center marker, stop and roll back right.
7. Continue around the end of the arena to run down the left side of the arena past the center marker. Stop. Back up. ***Hesitate to demonstrate completion of the pattern.***

143. APHA Reining, Amateur
 144. APHA Reining, All Ages

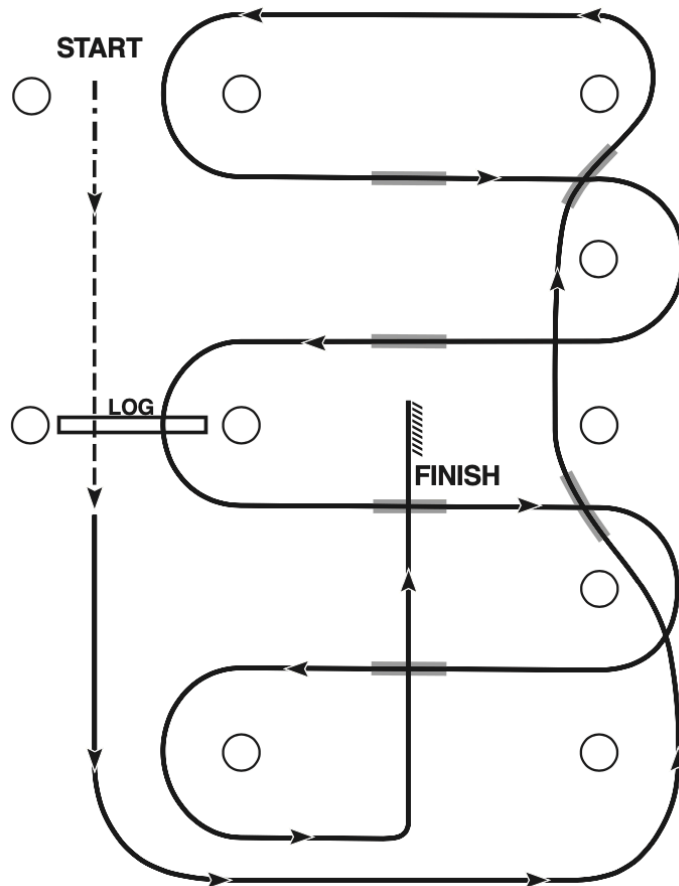


Horses may walk or jog to the center of the arena. **Horses must walk or stop prior to starting pattern.** Beginning at the center of the arena facing the left wall or fence

1. Beginning on the right lead, complete three circles to the right: the first two circles large and fast; the third circle small and slow. Stop at the center of the arena. Hesitate.
2. Complete four spins to the right. Hesitate.
3. Beginning on the left lead, complete three circles to the left: the first two circles large and fast; the third circle small and slow. Stop at the center of the arena. Hesitate.
4. Complete four spins to the left. Hesitate.
5. Beginning on the right lead, run a large fast circle to the right, change leads at the center of the arena, run a large fast circle to the left, and change leads at the center of the arena. **(Figure 8)**
6. Continue around previous circle to the right. At the top of the circle, run down the middle to the far end of the arena past the end marker and do a right rollback- no hesitation.
7. Run up the middle to the opposite end of the arena past the end marker and do a left rollback- no hesitation.
8. Run past the center marker and do a sliding stop. Back up to the center of the arena or at least ten feet **(3m)**. Hesitate to demonstrate completion of the pattern. Exhibitor may dismount and drop bridle to the designated judge.

Y, Nov Am, Green Western Riding Pattern #1

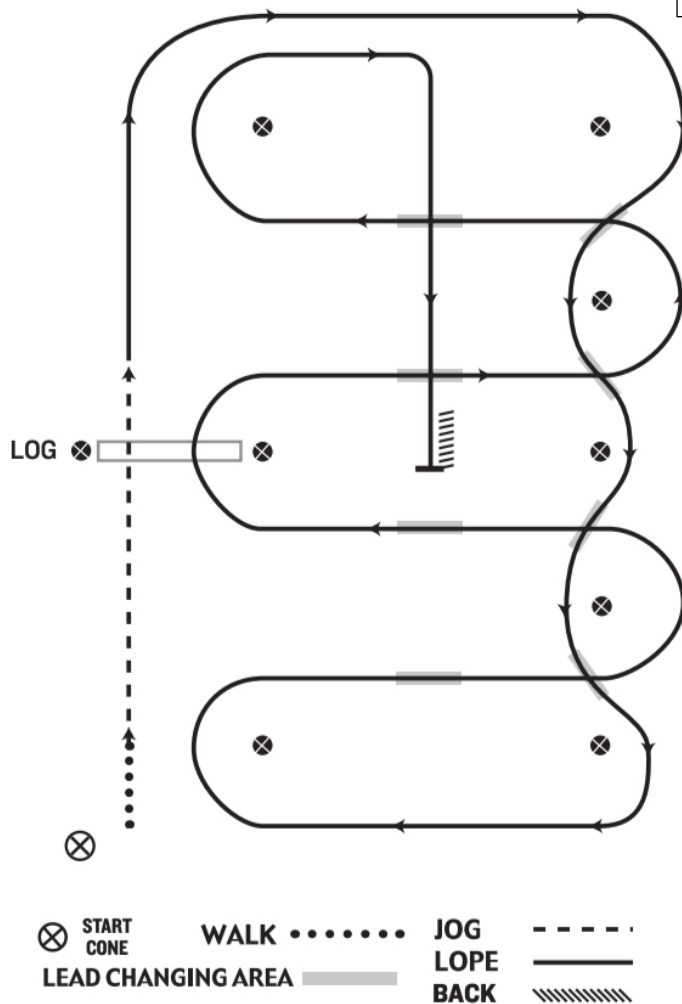
241. APHA Western Riding, Youth 18 & Under
242. APHA Western Riding, Green Horse
243. APHA Western Riding, Novice Amateur



1. Walk at least 15 feet from start cone to the first marker, as drawn, transition to jog, jog over log.
2. Transition to left lead and lope around end.
3. First line change.
4. Second line change, lope around end of arena
5. First crossing change.
6. Second crossing change.
7. Lope over log.
8. Third crossing change.
9. Fourth crossing change.
10. Lope up the center, stop and back.

Western Riding Pattern #6

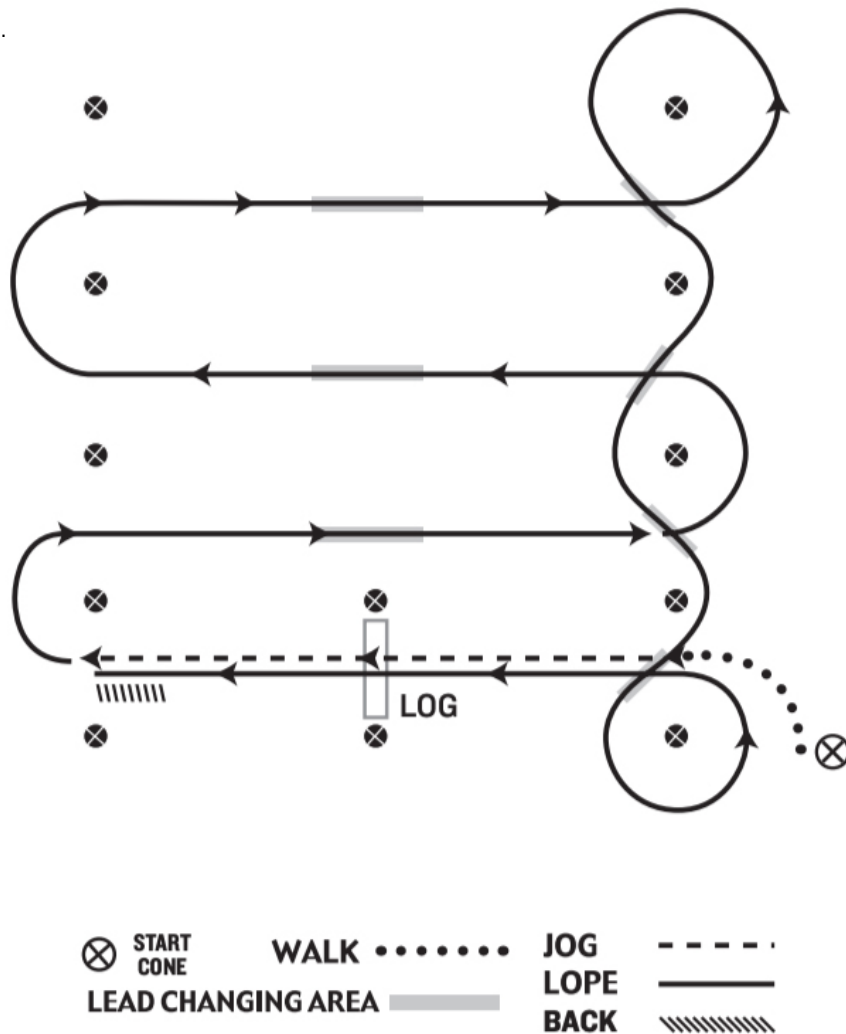
240. All Breed Western Riding, Open
 244. APHA Western Riding, Amateur
 245. APHA Western Riding, Amateur SPB



1. Walk at least 15 feet from start cone to the first marker, as drawn, transition to jog, jog over log
2. Transition to right lead & lope around end
3. First line change
4. Second line change
5. Third line change
6. Fourth line change lope around the end of arena
7. First crossing change
8. Second crossing change
9. Lope over log
10. Third crossing change
11. Fourth crossing change
12. Lope up the center, stop & back

Western Riding Pattern #7

246. APHA Western Riding, All Ages
247. APHA Western Riding, All Ages, SPB



1. Walk at least 15 feet from start cone to the first marker, as drawn, transition to jog, jog over log.
2. Transition to the lope, on the right lead
3. First crossing change
4. Second crossing change
5. Third crossing change
6. Circle & first line change
7. Second line change
8. Third line change
9. Fourth line change & circle
10. Lope over log
11. Lope, stop & back